

ArcGIS 4: Sharing Content on the Web

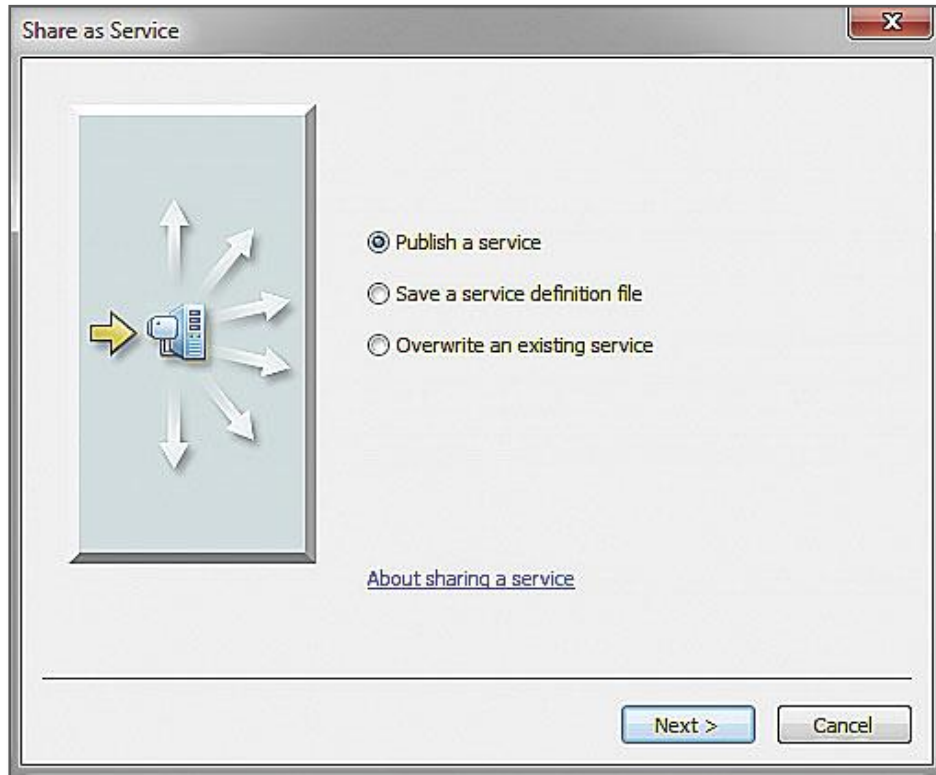
Make your content more accessible

Register now

SGD\$1,440 / pax

Level: Intermediate | Course duration: 3 days

Esri Singapore's intermediate GIS training course for experienced users of ArcGIS Desktop, who want to focus on sharing content on the web.



What is the course about?

Learn to share geographic content, making it accessible to everyone who needs it, when and how they want to access it. This course teaches how to publish your organization's authoritative GIS data, maps, and tools as services that can be discovered on your organization's public or private ArcGIS portal, easily accessed from desktop and online applications, and featured in web and mobile apps. ArcMap is used to complete course exercises.

Who is the target audience?

- GIS Professionals, Map Designers, Administrators, Application Developers, GIS Managers and other experienced ArcGIS users who want to share geographic content in web maps and web mapping applications
- Developers who want to incorporate GIS services and web maps into custom applications

Are there any prerequisites?

Completion of [ArcGIS 2: Essential Workflows](#) or equivalent knowledge is required.

What skills will I learn?

After completing this course, you will be able to:

- Author and publish map services to share your authoritative GIS data
- Publish feature services to enable editing of GIS data over the web
- Create and publish image services to provide fast access to imagery
- Publish geoprocessing services to share your GIS models and analysis results
- Share GIS resources as stand-alone services and in web maps and web mapping applications

Course topics

The ArcGIS platform

- Advantages of the ArcGIS platform
- ArcGIS for Server and GIS services
- Using a portal
- Creating a web map

Publishing to the platform

- Workflow: Publishing services
- Exploring the ArcGIS platform
- Registering a data source
- Publishing to the ArcGIS platform

Sharing published content

- Publishing and sharing content
- Workflow for sharing
- Choosing with whom to share
- Sharing content in Portal for ArcGIS

Publishing map services

- Map service workflow
- Guidelines for authoring map services
- Publishing a map service
- Applying the caching workflow

Publishing feature services

- Sharing features
- Feature service workflow
- Publishing a feature service

Enabling feature service editing

- Preparing data for editing
- Enabling feature attachments
- Publishing a feature service for editing
- Enabling feature service operations

Creating and sharing web applications

- Types of apps
- Configurable apps
- Web AppBuilder for ArcGIS
- Building a configurable app

Publishing image services

- Preparing to publish an image service
- Building pyramids and caches
- Publishing an image service

Publishing geocode services

- Creating and publishing a locator
- Using a geocode service
- Publishing a geocode service

Publishing geoprocessing services

- Using analysis tools
- Authoring and running a model
- Using geoprocessing services
- Publishing a geoprocessing service