

ArcGIS for Server: Site Configuration and Administration

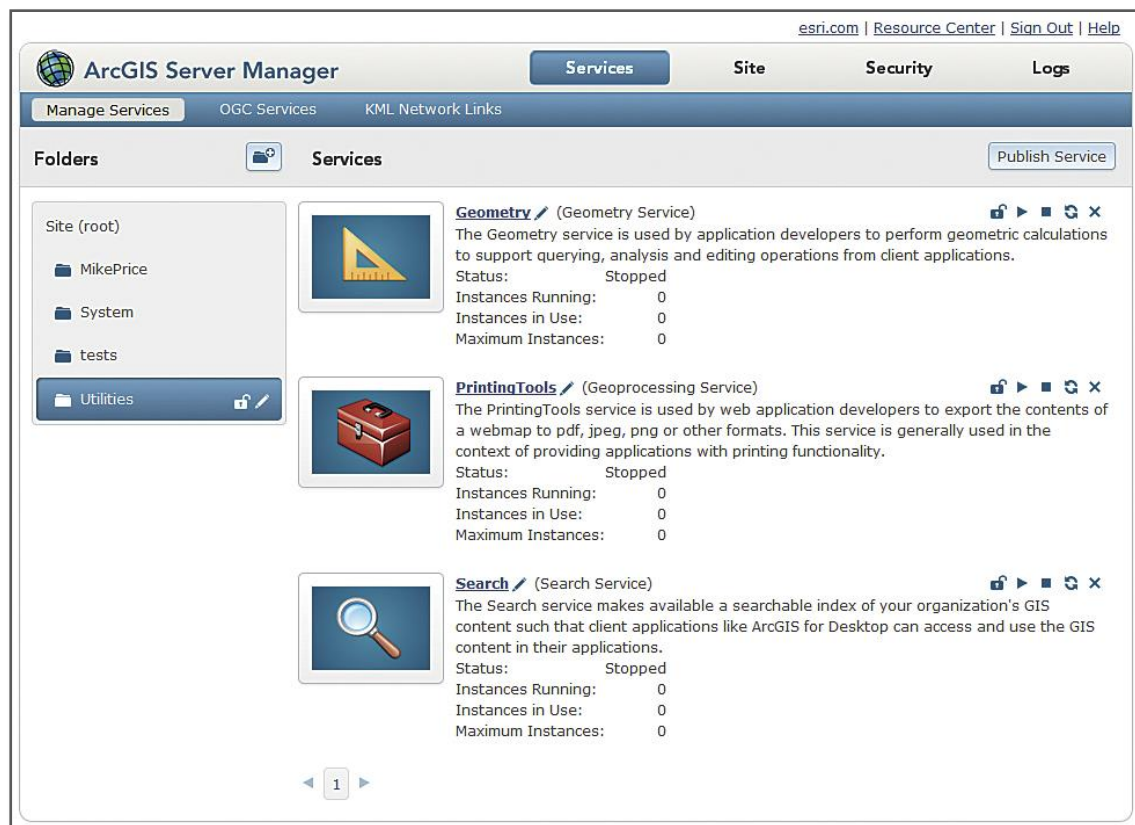
Enable ArcGIS within your infrastructure

Register now

SGD\$1,440 / pax

Level: Intermediate | Course duration: 3 days

ArcGIS for Server improves the way your business works by bringing the power of GIS into the hands of everyone in your organization, enabling better decision making.



What is the course about?

This course will teach you how to successfully install, configure, and manage ArcGIS for Server – to enable GIS content sharing across the enterprise or on the web. You will learn the ArcGIS for Server architecture and apply recommended workflows to configure ArcGIS Server sites and manage GIS services, applications, data, and users. Techniques and best practices to ensure system performance and security are emphasised.

Who is the target audience?

IT administrators, system administrators, GIS web administrators, and other professionals who are responsible for installing, managing, or supporting ArcGIS for Server.

Are there any prerequisites?

Completion of [ArcGIS 4: Sharing Content on the Web](#) or equivalent knowledge is required.

What skills will I learn?

After completing this course, you will be able to:

- Successfully install ArcGIS for Server and create an ArcGIS Server site
- Configure the Web Adaptor component to integrate your ArcGIS server with a web server
- Publish services that have the capabilities required for your applications
- Plan, create, and update a cache for high-performing map and image services
- Tune and monitor services to ensure high performance
- Implement security for your site and services that meets the needs of your organisation

Course topics

Installing ArcGIS for Server

- Sharing GIS
- GIS in end user applications
- Types of GIS services
- Accessing GIS services
- ArcGIS Server licensing
- Workflow for administering ArcGIS Server
- ArcGIS Server installation
- System requirements

Creating an ArcGIS Server site

- ArcGIS Server site architecture
- Administrative applications

Controlling access to your ArcGIS Server site

- ArcGIS Server role types
- Granting privileges
- Defining roles
- ArcGIS Server built-in user and role store
- External user and role store
- External user store with built-in role store
- Disable primary site administrator account

Configuring the Web Adaptor

- Service capabilities
- Choose the appropriate capability

Course topics (cont.)

Managing service resources

- What is a resource?
- Copy resources or register them?
- Copying resources to the ArcGIS Server site
- Copying data to a managed geodatabase
- Registering resources with ArcGIS Server
- Step 1: Make resources accessible
- Step 2: Grant the ArcGIS Server account access
- Step 3: Register a location in the data store
- Step 3: Register a location with a separate server path in the data store
- Choose a data registration method
- Synchronising publisher and server data
- Updating services

Configuring service capabilities

- Service capabilities
- Choose the appropriate capability

Tuning services

- Altering service properties
- Tuning services
- Viewing ArcGIS Server logs

Creating and updating caches for map and image services

- What is a cache?
- Building a map cache
- Allocating resources to caching
- Tools for managing caches
- Workflow: Updating caches

Securing services

- Authentication and authorization
- ArcGIS Server authentication
- Tokens
- Web server authentication
- Choose an authentication method
- End user roles
- Defining end user roles

Building multinode sites

- Scaling ArcGIS Server
- High availability
- Add a machine to the site
- ArcGIS Server licensing
- Clusters

Backups and restores

- Backup and recovery

Securing the ArcGIS Server site

- Securing server files
- Firewalls
- SSL encryption
- How will you secure your site?
- Backup and recovery

ArcGIS for Server platforms

- Platform options
- On-premises platform
- Cloud deployments
- Choose a platform