

# Getting Started with ArcGIS Pro

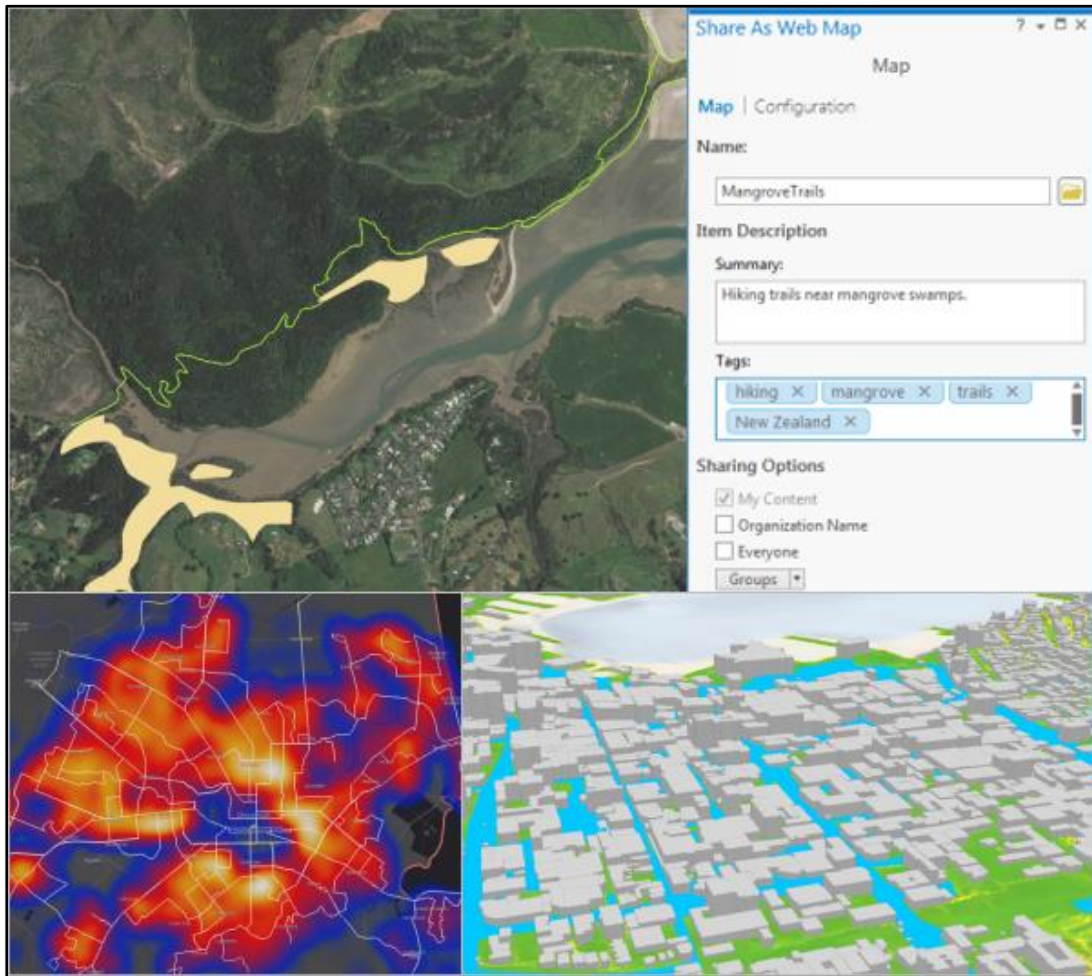
Visualize, edit and analyze geographic data in both 2D and 3D

Register now

SGD\$480 / pax

Level: Beginner | Course duration: 1 day

ArcGIS Pro is the premier professional desktop GIS application from Esri. With ArcGIS Pro, you can visualize, edit, and analyze your geographic data in both 2D and 3D.



## What is the course about?

Esri's next-gen 64-bit desktop GIS product is ArcGIS Pro. Technologically ahead of everything else on the market, ArcGIS Pro provides professional 2D and 3D mapping in an intuitive user interface. You can think of ArcGIS Pro as a big step forward—one that advances visualization, analytics, image processing, data management, and integration. After you create projects, maps, layers, tools, and more, ArcGIS Pro has several options for sharing your work with others.

## Who is the target audience?

New ArcGIS Pro users.

## Are there any prerequisites?

- Experience with Windows-based software for basic file management and browsing is required

## What skills will I learn?

After completing this course, you will be able to:

- The basics of GIS and coordinate systems
- Creating projects and understanding the project folder structure
- Visualise 2D and 3D data within the same interface
- Editing geographic data in 2D and 3D environments
- Analyse data in both 2D and 3D scenarios

## Course topics

### GIS basics

- Definition of GIS
- GIS data models
- The geographic approach
- Ways to apply GIS

### Importance of coordinate systems

- Definition of location
- Types of coordinate systems
- Spatial Properties and distortion

### Create a map

- Start a project
- Add data to the map
- Navigate the map
- Create bookmarks

### Visualise and editing

- Symbolising map layers
- Edit features
- Edit attribute data

### Analyse

- Geoprocessing tools
- Create and calculate analysis layer

### Explore 3D data

- Add and explore raster data
- Converting map to scene
- Add elevation surface
- Displaying layers in 3D
- Extruding features