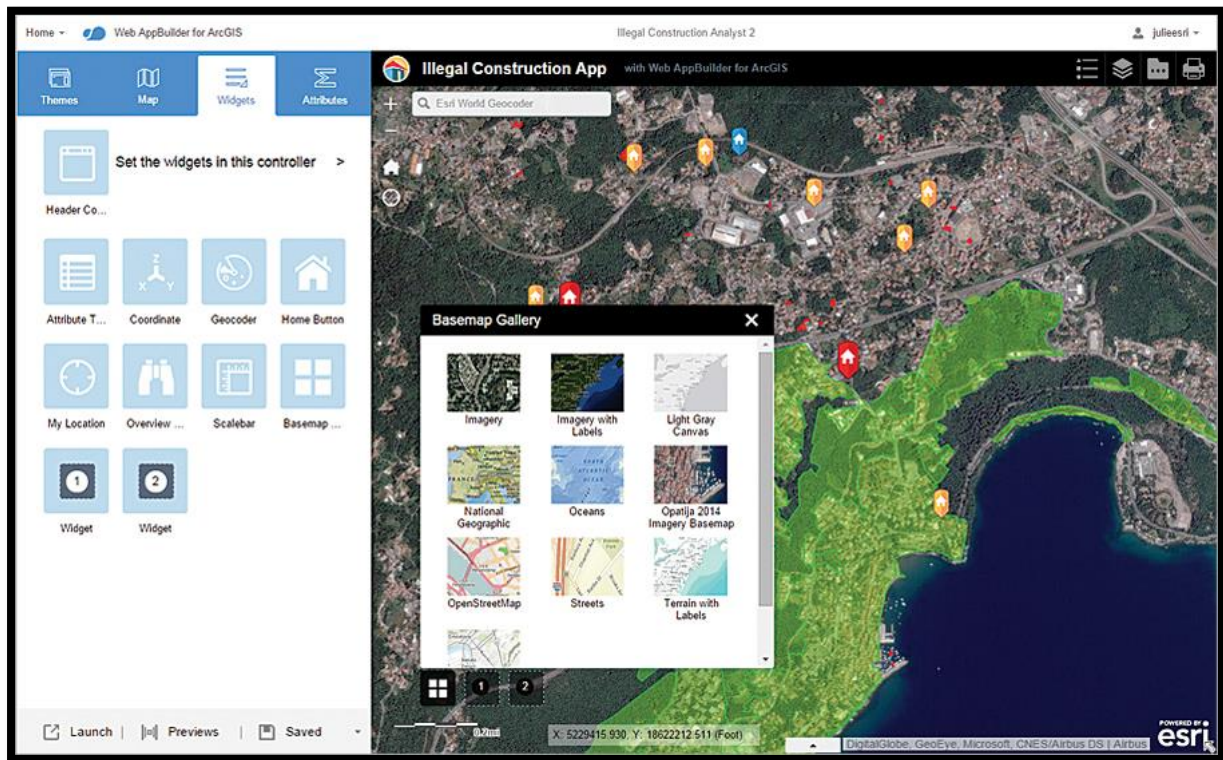


## Configuring Web Apps Using ArcGIS Web AppBuilder

Make Custom-Looking Apps Without Custom Coding



Level: Beginner

Course Duration: 1 day

### What is the course about?

Learn how to easily create intuitive, focused web apps that are accessible on desktop and mobile devices—without writing any code. This course shows how to take advantage of existing web maps, themes, and widgets to build apps that feature your organization's branding and deliver the functionality your users require.

### Who is the target audience?

- Designed for GIS professionals and other knowledge workers who want to create web applications to share web maps and other geospatial content
- Developers interested in creating custom widgets and themes

## Are there any prerequisites?

- Publisher or Administrator role in an ArcGIS Online for Organization
- Completion of ArcGIS Online for Organisations: Publisher Workflows

## What skills will I learn?

After completing this course, participants will be able to:

- Plan a web app's design based on the audience and required functionality.
- Configure themes and widgets to meet web app requirements.
- Evaluate web app design and functionality on virtual devices.
- Publish a web app.

## Topics

### 1. Introduction to Web AppBuilder for ArcGIS

- Web AppBuilder and the ArcGIS platform
- Components of a Web AppBuilder web app
- Identifying the components of a web app
- Creating a web app using Web AppBuilder
- Adding metadata to your web app

### 2. Applying themes to web apps

- App design considerations: requirements gathering
- The importance of branding
- Choosing a theme
- Using shared templates
- Create a template from a Web AppBuilder web app

### 3. Configuring widgets in web apps

- App design considerations: functionality
- Understanding widgets
- Working with widgets
- Choosing a widget
- Configure widgets in web apps

### 4. Building a 3D web app

- Cases for 3D web apps
- Creating a 3D web app using Web AppBuilder