



The Future is Yours to Create

Punggol Digital District Masterplan Exhibition

Contents

Imagine a **vibrant and inclusive place** where technology and social innovation transforms the way we work, live, learn and play.

This green and seamlessly connected space reflects our aspirations for Singapore's future.

Whether you are a student, resident, worker or entrepreneur, we invite you to shape this district with us. Together, we can make Punggol Digital District **a place everyone is proud to be a part of.**

01 One Integrated Masterplan

How are we creating the future at Punggol Digital District?

02 Community Spaces & Amenities

How will you live and play in PDD?

What are some of the amenities you can enjoy?

How can you bring your ideas to life?

03 District-Wide Infrastructure & Services

How can you make more time for things that matter?

How can you work, live, learn and play in a smarter, cleaner and greener way?

04 Business, Economy & Learning

What are the new industries and jobs that will drive Singapore's future economy?

What will the future of learning be like in PDD?



Create the Future at Punggol Digital District

Punggol Digital District is the next phase of evolution for Punggol.

Home to a business park and university, the District will foster industry-academia collaboration and enable the integration of urban solutions to make living more convenient and sustainable.

ONE INTEGRATED MASTERPLAN

This is the first time in Singapore we bring together:

A **COMMUNITY PLAYGROUND** for all residents of Punggol

A **CAR-LITE PRECINCT** that allows everyone to travel with ease

A vibrant **ECONOMIC and LEARNING HUB**


A District where everyday living is **GREENER & more SUSTAINABLE**



Public spaces for a vibrant community



New amenities for greater convenience



More transportation options to ease commuting



A university of applied learning



A business park for the digital and cyber security industries



Singapore's first "Enterprise District"




Urban solutions for a more liveable and sustainable environment




Look forward to community and event spaces such as open parks for community interactions and healthy living.



Discover a variety of retail and dining options as well as amenities such as childcare centres and community club.



Car-lite travel will be a breeze with a new MRT station, LRT lines, autonomous vehicles, and facilities for cyclists and PMD-users.



The new SIT campus will bring learning opportunities to the community and **12,000 students**. Applied degree programmes will offer students a unique curriculum that integrates work and study, enabling seamless transition into their careers.



These key growth sectors will bring **28,000 jobs** closer to home for Punggol residents and those in the north-east region.



This new planning approach allows industry and academia to house their facilities in each other's spaces for greater collaboration and synergy.



Innovative solutions include Integrated Facilities Management, a Pneumatic Waste Conveyance System and solar power generation technologies.

How will you live and play in PDD?

Imagine a community playground for all, with new public spaces and amenities amidst lush greenery.

Taking a break to connect with nature? Or participating in recreational activities with friends and family? Take your pick of the various public spaces designed with the community in mind.

A bustling **Market Village** located at the eastern end of the Campus Boulevard will offer new retail and dining options by the coast.



Enjoy seamless connectivity to **Punggol Town Centre**, the future **Punggol Town Hub**, **Regional Sports Centre**, and other recreational destinations.



Take a pleasant walk through the heart of the Digital District via the **Campus Boulevard** that will bring you to the waterfront and Coney Island.

Old Punggol Road will be transformed into a **Heritage Trail**, where nature-lovers can cycle or take a leisurely stroll.



A **1.3km green link** from Punggol Waterway Park to Punggol Promenade Park Connector, where existing trees along Punggol Road will be conserved.

Any greenery removed will be replaced elsewhere within the District, ensuring **ample greenery and rustic charm**.

Green spaces within the SIT campus are equivalent to **10 football fields of shared parks** for the community to enjoy.

A vibrant place for **community events and activities**

A **800m pedestrianised street** lined with a variety of shopping and dining options



A new naturally ventilated **Hawker Centre** with technologies such as e-payments will enable you to get your meals faster. Do your part to create a clean and pleasant dining experience for you and your family with an Automated Tray Return system.



Enjoy access to community services and activities at a **Community Club** for all!



Childcare Centres located in close proximity to the Heritage Trail will allow your young ones to explore the outdoors in garden spaces close to nature.

What are some of the amenities you can enjoy?

Look forward to a range of new amenities that will better serve your needs.

How can you bring your ideas to life?

Have an idea to solve a problem or to enhance everyday living?

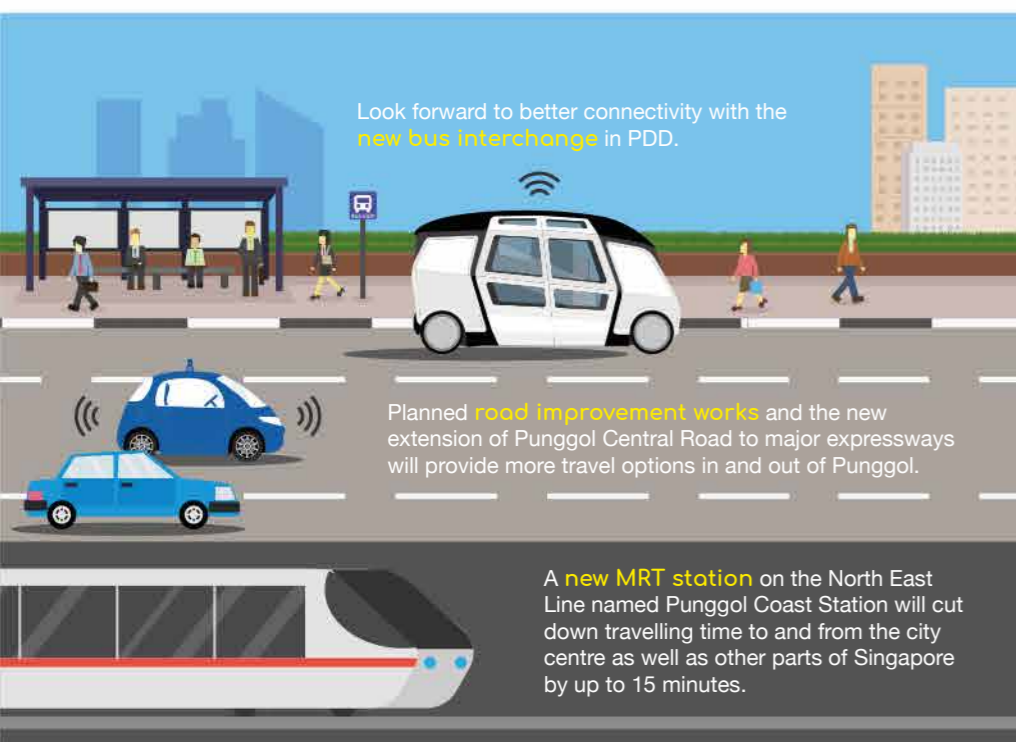
Punggol Digital District will be designed with an **open digital platform** to allow continual experimentation and innovation. Plug into this platform to create new products and services!



How can you make more time for things that matter?

Imagine travelling home or to your workplace with ease. Upcoming improvements are planned to provide a better commuting experience that will save you time and hassle.

The District will also be a connected, walkable and PMD (Personal Mobility Device)-friendly environment so that you can walk, cycle, scoot, or perhaps take a driverless shuttle to your daily destinations!



Experimenting New Ideas!

Can we go car-lite and get to anywhere in PDD without driving? Consider these possibilities and more!

- Hop on board on autonomous bus that arrives on schedule**
- Hail on-demand AV transport services with your mobile devices**
- Ride your bicycles on cycling paths lining major roads**
- Conveniently access PMD/cycling-friendly facilities such as secured storage racks, showers, changing facilities and lockers**

How can you work, live, learn and play in a smarter, cleaner and greener way?

Imagine a District that is clean and green, where technology and innovation create a more liveable and sustainable environment for you and your family.

Experimenting New Ideas!

What if you could connect to the Internet just by switching on a light?

In the future, Light Fidelity technology – or Li-Fi – could revolutionise secure internet access in the workplace and homes, just by using light bulbs!

You could connect to the Internet via light waves from LED bulbs!

Experimenting New Ideas!

How can we deliver goods more efficiently?

Goods could potentially be dropped off and picked up at a Centralised Logistics Hub, improving productivity and reducing congestion on roads.

Goods are delivered to the Centralised Logistics Hub

Robots or Autonomous Vehicles will pick up goods from the Hub and deliver them to customers within the District

A Federated Lockers Network will allow you to collect your purchases from parcel lockers near your home or at MRT stations at your convenience!

Roofs of buildings will be packed with Solar Power generation technologies, adding more clean energy to the power grid.

An Integrated Facility Management and Estate Operations Centre will help us manage our buildings and estate more sustainably and enhance user experiences. Building data will be consolidated and analysed, enabling optimal energy usage.

A District Cooling System will centralise cooling needs, reducing energy consumption and our carbon footprint.

No more odour from refuse chutes and waste collection trucks with the district-wide Pneumatic Waste Conveyance System. This automated waste collection system uses a vacuum-type underground pipe network which seals the odour in and keeps the air fresh all around!

What are the new industries and jobs that will drive Singapore's future economy?

PDD will house key growth industries of the digital economy – cyber security and digital technologies – and will provide exciting job opportunities for the future.

Digital capabilities like data science and cyber security strengthen Singapore's economic infrastructure, and support the digitalisation of other industries. This enhances Singapore's position as a safe and attractive place for companies to do business.



What will our future workspace look like?



We could experience quicker and fuss-free building access with facial recognition technologies. Access cards could be a thing of the past!



With smart technologies, we could adjust the room temperature and lighting in our workspace to just how we like it.



A safer working environment could be achieved with robotic security monitoring, backed by video analytics to anticipate threats round the clock.

What will the future of learning be like in PDD?

Imagine having workspaces right next to learning spaces, where students can easily go from their classroom to a real-life working environment and apply what they have learnt.

Co-located with JTC's business park buildings, the Singapore Institute of Technology (SIT) is a community-based university that enables students, faculty and industry professionals to come together to collaborate on projects that can benefit the community at large.

New ideas conceived in SIT could be tested and adopted in PDD, bringing these ideas to market faster.

The MakerSpace in SIT will bring the learning-by-doing experience to you, so you can grow the tinkerer in you!

SIT's research labs could be located in JTC's developments so that enterprises can conduct R&D in collaboration with the university.

Innovative enterprises can tap on SIT's strength in applied programmes, talent pool and research capabilities in the areas of food technology, design, assistive technology and hospitality.

Students can find real-world learning opportunities in industry spaces located within their campus, fostering collaboration and the exchange of ideas with industry professionals.

Artist's impression of JTC's Business Park building

Artist's impression of the new SIT Campus

